

## For more information

ncsales@opusinspection.com  
www.opusinspection.com  
www.esp-global.com  
800-695-4377

**Corporate Headquarters:**  
7 Kripes Road  
East Granby, CT 06026



# New System1® Coming Soon!

Custom Designed for North Carolina\*



## System1® Technical Specifications

### Cabinet Dimensions

- 42" tall, 30" wide, and 23" deep. Lockable wheels

### PC

- Dell OptiPlex 3080 Tower XCTO
- Intel(R) Core(TM) i3-10100 (4 Cores/6MB/8T/3.6GHz to 4.3GHz/65W)
- 4GB DDR4 non-ECC Memory
- M.2 128GB PCIe NVMe Class 35 Solid State Hard Drive
- Intel Integrated Graphics, Dell OptiPlex

### Wireless Barcode Reader

- Honeywell 1952 wireless bar code reader
- Bluetooth Range: Up to 60 ft.

### Printer

- HP LaserJet M404

### Monitor

- Dell 22" LED Monitor - E2220H

### Wireless OBD Module

- An external 12V battery adapter to allow technicians to obtain power when none is supplied on the DLC
- Contains a 12V lithium-ion battery to maintain device uptime between tests
- Battery provides power when not available from DLC
- Custom designed, rib-reinforced, hardened plastic case—made to withstand the harshest of shop environments
- Soft rubber external boot to protect customer vehicles from scuffs and damage
- Bluetooth Range: Up to 60 ft.



**OPUS**  
INSPECTION

\* Certification Pending

All details & specifications are preliminary & subject to change



# Your revenue is tied to the reliability of your OBD System. And the company behind it.

## There is a reason Opus Inspection is #1 in North Carolina.

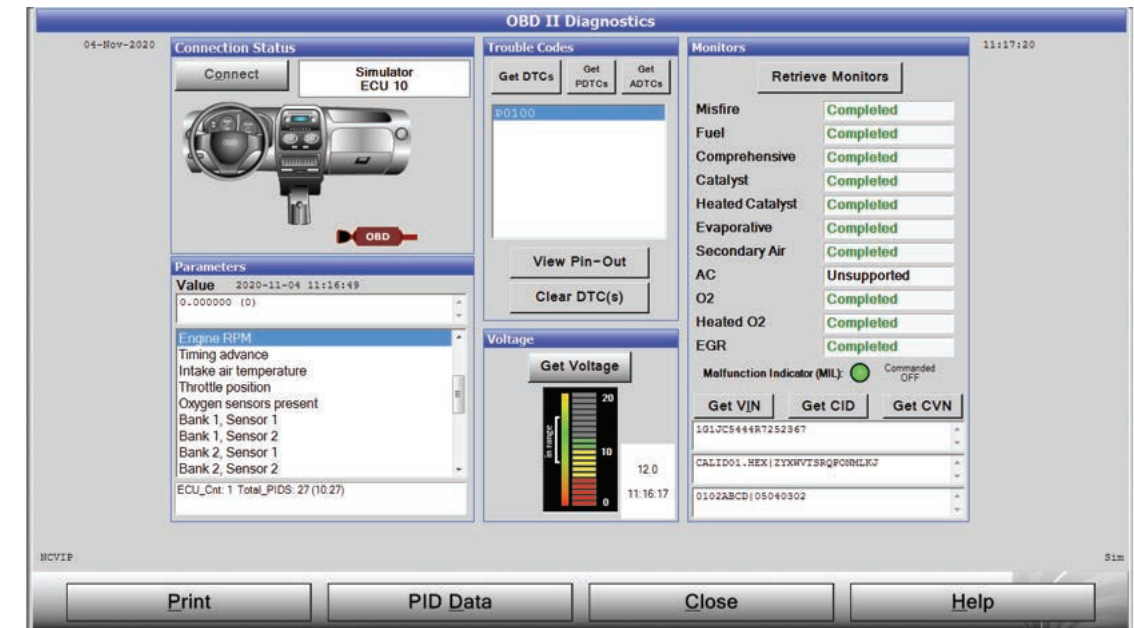
Opus has been a partner to the North Carolina emissions program since it began. In fact, more NC shops—nearly 75%—rely on us than any other company. And it's not only for our technology. It's for our reliability. We have more factory-direct service representatives than all of our competitors combined. And they're strategically located across the state. That means faster service to keep you up and running.



## The new System1® you need.

Most NC analyzers are now over 15 years old and well past intended life cycle. The original technology and operating systems are obsolete, therefore it's the right time to upgrade to the all new analyzer offer from Opus Inspection. Get ready to enjoy faster testing and improved reliability with the new System1® (Part #: 00-10400-011).

## Vehicle Diagnostic Page



- Read and clear DTCs
- Read and display I/M Monitor status
- Read and display pending DTCs
- Display PID data

## Getting your new System1® has never been easier!

Sure you can purchase the new System1®, but why shell out large sums of money for expensive equipment only to watch it become obsolete. There is a better way!

## Opus now introduces Equipment-as-a-Service (EaaS) in North Carolina. For one low monthly payment, you get flexibility and control!

### EaaS offers:

- The most technologically advanced equipment available
- Complete warranty for as long as you participate with full parts and labor coverage
- Free delivery, installation and training by our highly-trained technicians
- Free toner
- 100% satisfaction guaranteed



## Features of the New System1®



Wireless Barcode Reader



Dell 22" Monitor



HP Printer



Wireless OBD Module